

Bell Push



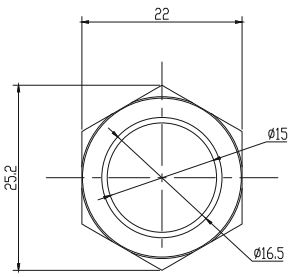
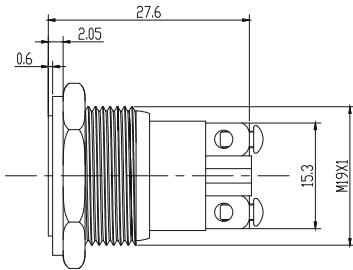
Pictured on 52mm dia rose, also available without rose fixing.



See full details next page

Finishes : Stainless Steel, Black

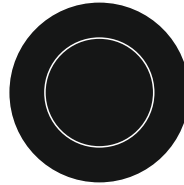
Bell Push Black



Product Code

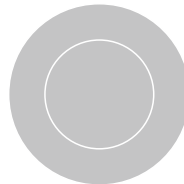
SPEC.44931

Ö19mm Panel Cut Out Diameter The Front
Shape: Flat 0.6mm Edge Terminal:
Screw Operation type: Momentary Surface
Finish: Brushed Steel (316) Circuit
Configuration: 1NOMax. Switch Rating: 2A /
DC 36V IP rating: IP68



Product Code

20.3011.SS = Satin Stainless steel



Code Illustration

SPEC.44931 = Black

Finishes : Stainless steel, Black